



# ANNUAL 2010–2011 REPORT



# 2010–2011 MSHSL Board of Directors



**Les Zellmann**  
St. James  
President



**Mindy Sparby**  
Belle Plaine  
Vice President



**John Schumacher**  
Park Rapids Area  
Treasurer



**Perry Aadland**  
Chicago Lakes Area



**Kim Algoo**  
Shakopee



**Rick Bleichner**  
Breckenridge



**Carol Bomben**  
Eden Prairie



**Laurie Esau**  
Orono



**Mark Fredericksen**  
Waconia



**John Hamann**  
Underwood



**Walter Hautala**  
Mesabi East



**Ray Kirch**  
Osseo



**Mike Kolness**  
Ada-Borup



**Chris Laird**  
Heritage Christian Academy



**Jill Lofald**  
Duluth Central/Denfield



**Mike Manning**  
Rosemount



**Brent Robbins**  
Plymouth



**Mike Rusinko**  
Eden Prairie



**Luanne Wagner**  
St. Francis



**Bill Webb**  
Edina

## 2010–2011 Representative Assembly Delegates

*The rulesmaking body of the Minnesota State High School League*

### CLASS A REGIONS

#### Region 1A

1. Dan Hurley, Activities Director, Chatfield
2. Jeff Sampson, Principal/Activities Director, Medford
3. Krin Abraham-Berg, Speech Coach, Houston

#### Region 2A

4. Randy Soma, Athletic Director, Fairmont
5. Jeff Boran, Athletic Director, Waterville-Elysian-Morristown
6. Dave Swanberg, Athletic Director, LeSueur-Henderson

#### Region 3A

7. Mike Knutson, Athletic Director, Benson
8. Dave Marlette, Superintendent, Tracy-Milroy-Balaton
9. Todd Oye, Athletic Director, Luverne

#### Region 4A

10. Mike Aurich, Athletic Director, Concordia Academy-Roseville
11. Jeff Wall, Athletic Director, Maranatha Christian Academy, Brooklyn Park
12. Mike Brown, Asst. Administrator, St. Paul Academy and Summit School

#### Region 5A

13. Ron Starke, Athletic Director, Annandale
14. Jerry Westphal, Athletic Director, Milaca
15. Dale Decker, Athletic Director, Howard Lake-Waverly-Winsted

#### Region 6A

16. Paul Weinzler, Principal, Long Prairie-Grey Eagle
17. Janelle Bright, Coach, Bertha-Hewitt
18. Blaine Novak, Principal, New York Mills

#### Region 7A

19. Kathy Fredricksen, Athletic Director, Moose Lake
20. James Lah, Fine Arts, Ely
21. Roger Koster, Athletic Director, Silver Bay

#### Region 8A

22. Bruce Jensen, Superintendent, Kittson Central, Hallock
23. Eldon Sparby, Principal/Activities Director, Greenbush-Middle River
24. Laine Larson, Superintendent, Thief River Falls

### CLASS AA REGIONS

#### Region 1AA

25. Jeff Whitney, Athletic Director, Rochester Mayo
26. Joel Leer, Principal, Northfield
27. Mark Winter, Athletic Director, Winona

#### Region 2AA

28. Bruce Remme, Activities Director, Marshall
29. Keith Randklev, Principal, Mound-Westonka
30. Dick Ungar, Activities Director, Chanhassen

#### Region 3AA

31. Brian Fell, Activities Director, Bloomington Jefferson
32. Matt Percival, Athletics Director, Eastview, Apple Valley
33. Mike Sjoberg, Coach, St. Thomas Academy, Mendota Heights

#### Region 4AA

34. Trent Hanson, Athletic Director, East Ridge, Woodbury
35. Sue Sajevec, Teacher/Coach, St. Paul Arlington
36. Greg Nelson, Principal, North, North St. Paul

#### Region 5AA

37. Paul Gustafson, Activities Director, Rogers
38. Larry Lawler, Athletic Director, Park Center, Brooklyn Park
39. Bob Madison, Athletic Director, Mounds View

#### Region 6AA

40. Dave Wicker, Athletic Director, Patrick Henry, Minneapolis
41. Andy Ewald, Athletic Director, St. Louis Park
42. Reggie Perkins, Coach, Washburn, Minneapolis

#### Region 7AA

43. Joel Olson, Activities Director, Forest Lake
44. Tom Lenarz, Activities Director/Coach, Cloquet
45. Ed Saxton, Superintendent, St. Francis

#### Region 8AA

46. Lisa Johnson, Athletic Director, Monticello
47. Chris McElroy, Activities Director, St. Cloud Apollo
48. David Hartmann, Athletic Director, Alexandria

## MSHSL Administrative Staff

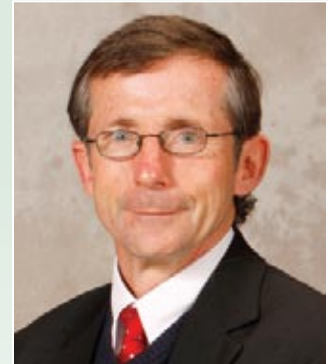
Executive Director ..... David Stead  
 Executive Assistant ..... Lynne Johnson  
 Associate Director ..... Lisa Lissimore  
 Administrative Assistant ..... Sheila Robinson  
 Associate Director ..... Kevin Merkle  
 Administrative Assistant ..... Amanda Johnson  
 Officials' Coordinator ..... Katie Vanderpoel  
 Associate Director ..... Jody Redman  
 Administrative Assistant ..... Amie Symens

Associate Director ..... Craig Perry  
 Administrative Assistant ..... Susi Hollenbeck  
 Assistant Director ..... Richard Matter  
 Accounting Assistant ..... Sharon Bahma  
 Ticket Assistant ..... Nancy Myers  
 Assistant Director ..... Chris Franson  
 Web Site Coordinator ..... Nancy Etter  
 Technology Assistant ..... Tracie Bressler

Director of Information ..... Howard Voigt  
 Assistant Information Director ..... Ellen Rajkowski  
 Media Credentialing Assistant ..... Yvonne Walsh  
 Media Specialist ..... John Millea  
 Program Specialist ..... Amy Doherty  
 Office Manager ..... Kristi Vesall  
 Administrative Assistant ..... Yvonne Walsh  
 Receptionist ..... Ann Bailey

# PRESIDENT'S REPORT

It has truly been an honor and a privilege to have served as the president of the Minnesota State High School League (MSHSL) Board of Directors during the 2010–2011 school year. Because of the continuing economic challenges and the continued financial constraints, school boards throughout the state focused their support on the values of participation in education-based activities sponsored by their school and the MSHSL. Knowing this, the MSHSL Board of Directors addressed policy decisions that would provide financial relief for member schools in as many ways as possible.



A number of tournament related proposals and bylaw changes were addressed. Concussion legislation, the extension of the MSHSL Foundation, and Continuing Education Requirements for head coaches were the major initiatives of the Board. Following are additional action items Board members approved:

- The addition of a seventh class of football (32 teams)
- Revisions to the policies that govern administrative regions, class competitions and competitive sections
- Temperature standards for alpine skiing
- A three-day tournament format for the State Wrestling Tournament
- Dates for the summer coaching waiver no-contract periods through 2023
- The addition of a wheel chair division in track and field beginning with the 2011 season
- The use of non-motorized golf pull carts beginning with the 2011 golf season
- A contract extension with KSTC-TV, Channel 45 through 2021

The League staff continues to conduct area meetings each fall and spring throughout the state. Constituent groups and board members meet with associations they represent to gather information in advance of board meetings as well as to share the results of the board discussion and vote. Administrative groups, coaches associations, and others provide valuable input for members when issues pertaining to individual school programs are addressed.

As I reflect on my four years as a member of the MSHSL Board of Directors, I want to thank Regions 1A and 2A for the confidence they placed in me and to assure each member school in all regions throughout the state that your Board listened to the input you provided well in advance of any decision-making. All decisions were made without regard to personal agendas, and a thoughtful discussion always preceded any action item on the agenda.

As with all successful organizations, the strength of the MSHSL lies in the information you share with the Board and staff members. The personal integrity of each coach, advisor and administrator provides the foundation upon which the values of education-based activities are reflected in each athlete and fine arts participant, now and in the future.

I have been humbled and blessed to have been able to serve as the Board president.

A handwritten signature in black ink that reads "Les Zellmann". The signature is fluid and cursive, with a long horizontal line extending to the right.

Les Zellmann  
St. James High School  
MSHSL Board of Directors, President  
2010–2011

# Mission

The Minnesota State High School League is a non-profit, voluntary association of public and private schools with a history of service to Minnesota youth since 1916. Its mission is to provide educational opportunities through interscholastic athletics and fine arts programs for students and leadership and support for member schools.

We believe:

- o Participation in school activity programs is a privilege and not a right.
- o Sportsmanship needs to have a constant presence in all school-based activity programs.
- o Students should have an equal opportunity to participate in all activities offered by their school.
- o Ethical behavior, dignity and respect are non-negotiable.
- o Student participants who choose to be chemically free must be supported.
- o Collaborative relationships with parents enhance a school's opportunity to positively impact student success.
- o Academic priorities must come before participation in athletics or fine arts activities.
- o Positive role models and an active involvement in a student's life by parents and others are critical to student success.
- o High school activity programs are designed for student participants and adults must serve in a supportive role.
- o The success of the team is more important than individual honors.
- o Compliance with school, community and League rules is essential for all activity participants.
- o Participation in school-sponsored activities must be inclusive, not exclusive.
- o Ethical behavior, fairness, and embracing diversity best serve students and school communities.

# History

The Minnesota State High School League was first organized in 1916 by a group of local superintendents. Then called the State High School Athletic Association, its mission was to promote amateur sports for boys and establish uniform rules for interscholastic contests.

In 1929, the Association broadened its scope to include speech and debate, and the Association's name changed to the Minnesota State High School League.

In 1960, the League incorporated under Minnesota Law as a non-profit, voluntary association of high schools. The League added music to its list of sponsored activities in 1965 and girls' athletics programs in 1969.

In 1973, Minnesota statutes provided that membership in the League is available to any high school in Minnesota that satisfied the compulsory attendance requirement under Minnesota Law. Thirty-seven non-public schools joined the League the next year.

A review of the League eligibility rules in 1980 resulted in the creation of TARGET Minnesota, a program that supports chemically free student leaders.

During the 1990's the League became the first activity association in the nation to sponsor girls' ice hockey and adapted athletic programs for students with disabilities.

In 2005, the League embarked on a new, innovative initiative called TeamUp. Through this program the League annually provides educational materials to school administrators to help them create a positive, safe athletic environment.

The Minnesota State High School League Foundation was created in 2007 to promote high school students' participation in interscholastic athletic and fine arts activities. The Foundation has awarded more than a million dollars in grants to fulfill its mission.

# Services to Member Schools

The Minnesota State High School League is a service organization providing its membership with publications, training opportunities, recognition programs, post-season tournaments, rules interpretation meetings, and many other services that assist in the administration of interscholastic activities.

The League serves students first and foremost, providing educational experiences through involvement in athletics and fine arts activities. Interscholastic competition leads to state tournament competitions which are conducted by the League. Students also are acknowledged through several recognition programs for academic achievements, community service, and leadership.

The League serves its member schools by providing competitive environments with rules that support fair play and equitable competition. School personnel, from elected local school board members to superintendents, from principals to athletic/activity directors, are invited twice annually to area meetings throughout the state to share concerns and discuss issues.

The League serves coaches and officials, both integral to equitable competition, by providing educational and training opportunities. Through the Coaches Education Program, coaches can learn about the science of sport, first aid, emergency response planning, and the rules that govern both student eligibility and the activities they oversee. Officials are provided with online meetings to review contest rules and are provided opportunities for further training in the mechanics of officiating.

The League serves the public in general as a complimentary extension of the classroom by providing activities for high school youth that teach lifelong lessons and develop responsible citizens. Communication with the general public takes many forms, not the least of which is a comprehensive Web site – [www.mshsl.org](http://www.mshsl.org).

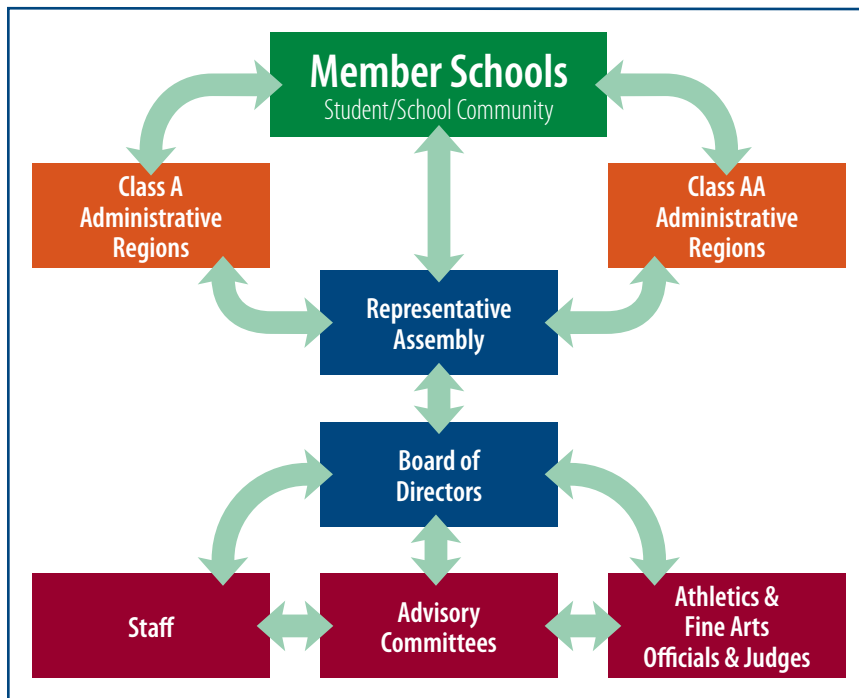
# Grassroots Governance

As a non-profit, voluntary association of public and private schools, the League is structured to listen to and respond to its members. Individual school boards decide every year to join the League. Each member school and its composite constituencies—students, parents, coaches, administrators, and school board members—have a voice at the grassroots level known as an administrative region.

A region committee comprised of representatives from League member schools manages the activities and events associated with each administrative region. Each of these 16 committees make decisions about how subsection and section competition is conducted; elect or appoint three people to serve on the Representative Assembly which acts on bylaws that govern eligibility and the administration of League activities; and they review proposed changes to League bylaws before consideration by the Representative Assembly. The committees also report to the 20-member Board of Directors, which oversees the administration of all League activities and events.

Activity Advisory committees provide direct information to the Board of Directors about activity programs. These committees—there's one for each activity the League sponsors—meet once a year to review and recommend changes to athletics and fine arts programs. Activity associations appoint people to serve on the advisory committees. Committee members generally serve two-year terms.

The intent is to involve everyone from students and their parents and coaches to school administrators and their elected school board members, in the League's decision-making process.



## 2010–11 Bylaw Changes

Forty-eight people, representing the League's membership, comprise the Representative Assembly, the League's legislative body. The Assembly meets annually to consider all bylaw proposals that come from League member schools, region committees, the Board of Directors, and state athletics and fine arts associations.

League bylaws govern the addition of new activities, season lengths, number of contests, eligibility standards, and amateurism requirements of student athletes and fine arts participants. Bylaws also set requirements for conduct, enrollment, and they give direction to scholarship, student transfers, and many other areas important to the sound administration of high school athletics and fine arts programs.

During the 2010–11 school year, the Representative Assembly approved amendments to the General Eligibility Bylaws which school administrators use to certify a student's eligibility. Bylaw 100 was amended to:

- Redefine the eligibility of students when they turn 20.
- Expand the graduation progress tracking period.
- Redefine where charter school students are eligible.
- Modify the definitions pertaining to continuation schools.
- Specify ineligibility for post-secondary participation.
- Expand the eligibility period of students who begin participation in 7th grade.

The Representative Assembly also approved an amendment to Bylaw 411 which governs the scheduling of contest. League member schools may schedule contests with non-member schools that follow all of the eligibility guidelines and bylaws of the state high school athletic/activity association in the state where the school is located. The state high school association must also be a member of the National Federation of State High School Associations and the competition must be approved by both the MSHSL and the association in the state where the school is located.

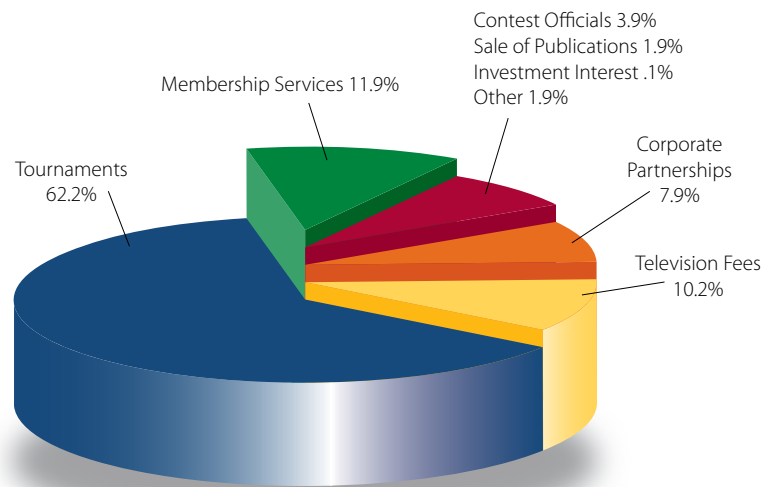
The student eligibility bylaws were updated following a year of study by an ad hoc committee comprised of more than two dozen coaches, principals, and superintendents who felt the changes would best serve the needs of member schools and their students.

The Minnesota State High School League is a non-profit organization. The League operates on an annual budget of about \$7.9 million and receives no funding from the state legislature.

Revenues generated from tournament ticket sales, broadcast rights fees, and other tournament related-income make up the majority of the League’s operating budget. The remaining portion of the budget comes from corporate sponsorships, publication sales, registration fees and investment income.

At the end of each fiscal year, revenue remaining after all expenses are paid, is distributed to member schools fortunate enough to have competed at the state level. Those shares of revenue during the past 10 years have averaged \$600,000 each year, an average of \$1,650 per school.

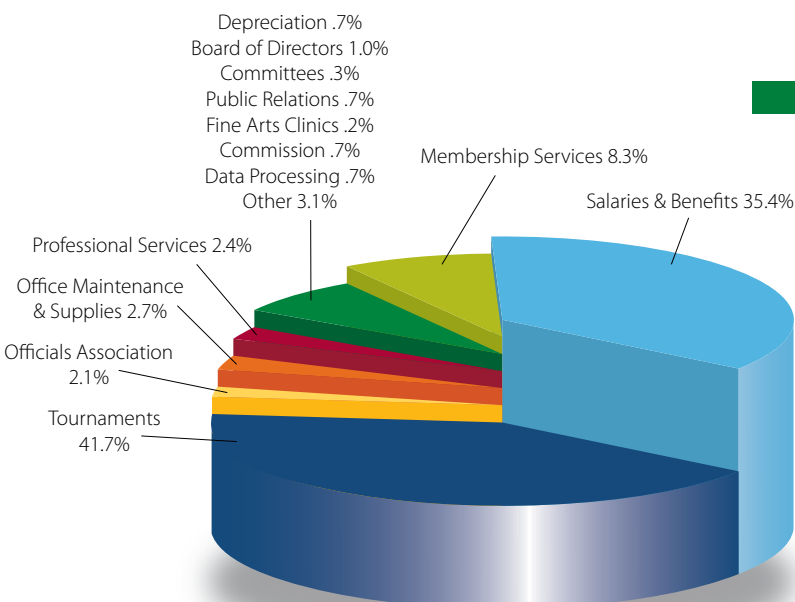
The Office of the State Auditor for Minnesota audits all financial records of the League. The audit report is mailed to League member schools.



## REVENUES \$7,990,119

- Tournaments \$4,971,214
- Television Fees \$815,820
- Membership Services \$951,790
- Sale of Publications \$151,552
- Contest Officials Registration \$313,532
- Investment Interest \$7,910
- Corporate Partnerships \$635,586
- Other \$142,715

## EXPENSES \$7,881,656



- Tournaments & School Reimbursement \$3,287,147
- Salaries & Benefits \$2,787,950
- Professional Services \$185,884
- Membership Services \$657,885
- Office Maintenance & Supplies \$215,327
- Other \$245,071
- Board of Directors \$81,129
- Committees \$20,422
- Officials Associations \$167,124
- Depreciation \$52,399
- Fine Arts Programs \$19,692
- Public Relations \$52,753
- Corporate Partnership Commission \$53,700
- Data Processing \$55,173

# Comparative Schedule of Tournament Revenues and Direct Expenses for the Years Ended July 31, 2011 and 2010

Tournament	2011**			2010*		
	Revenues	Direct Expenses	Excess (Deficiency) of Revenues Over Direct Expenses	Revenues	Direct Expenses	Excess (Deficiency) of Revenues Over Direct Expenses
Baseball	85,824	75,862	9,962	79,582	81,358	(1,776)
Boys' Basketball	529,671	224,865	304,806	436,929	228,773	208,156
Girls' Basketball	289,165	199,954	89,211	294,072	196,488	97,584
Cross Country Running	13,490	31,903	(18,413)	13,049	28,987	(15,938)
Football	822,015	325,431	496,584	832,972	324,790	508,182
Golf	11,482	46,819	(35,337)	12,413	58,498	(46,085)
Girls' Gymnastics	47,548	66,362	(18,814)	48,215	67,041	(18,826)
Boys' Hockey	1,483,738	343,290	1,140,448	1,352,025	334,242	1,017,783
Nordic Ski Racing	4,149	24,256	(20,107)	3,698	21,179	(17,481)
Alpine Skiing	4,031	25,201	(21,170)	3,955	24,090	(20,135)
Soccer	165,114	109,878	55,236	157,298	104,540	52,758
Girls' Softball	57,424	45,844	11,580	50,382	49,398	984
Boys' Swimming & Diving	46,450	51,600	(5,150)	48,186	49,120	(934)
Girls' Swimming & Diving	49,683	53,619	(3,936)	50,610	50,370	240
Boys' Tennis	5,117	33,816	(28,699)	5,239	29,063	(23,824)
Girls' Tennis	6,113	38,085	(31,972)	5,500	37,216	(31,716)
Track & Field	109,085	127,501	(18,416)	107,415	122,455	(15,040)
Girls' Volleyball	195,446	145,661	49,785	177,496	145,102	32,394
Wrestling	488,478	223,918	264,560	398,500	239,061	159,439
Synchronized Swimming	0	1,212	(1,212)	0	1,208	(1,208)
Adapted Soccer	5,422	18,469	(13,047)	6,925	17,422	(10,497)
Adapted Floor Hockey	13,266	22,716	(9,450)	9,760	18,007	(8,247)
Adapted Softball	4,774	17,937	(13,163)	5,920	17,643	(11,723)
Adapted Bowling	581	12,472	(11,891)	437	12,328	(11,891)
Debate	0	17,732	(17,732)	0	16,617	(16,617)
Speech	7,487	46,471	(38,984)	5,185	50,647	(45,462)
One Act Play	14,515	19,005	(4,490)	13,272	19,964	(6,692)
Girls' Hockey	282,627	204,263	78,364	251,466	200,634	50,832
Cheerleading	0	826	(826)	0	1,939	(1,939)
Girls' Dance Team	199,473	94,560	104,913	160,213	92,315	67,898
Lacrosse	29,079	23,587	5,492	27,622	22,602	5,020
Badminton	0	646	(646)	0	641	(641)
Visual Arts	(33)	646	(679)	0	645	(645)
<b>Total</b>	<b>4,971,214</b>	<b>2,674,407</b>	<b>2,296,807</b>	<b>4,558,336</b>	<b>2,664,383</b>	<b>1,893,953</b>

The tournament direct expenses shown above include only those expenses that are directly associated with conducting the tournaments (i.e. personnel, site, and program costs). School expense reimbursement and indirect costs such as membership services, salaries and benefits, postage, and other general administrative costs of the MSHSL have not been allocated to any specific tournaments and therefore, are not included in the schedule shown above.

\* From State Auditor's Report      \*\* End of year balance on League financial statements

## A 10-Year Comparison of School Reimbursements for Tournament Participation & Activity Registration Refunds\*\*\*

	Number of Schools Participating	Total Amount Returned	Average Per School
2001-02	359	476,296	1,326
2002-03	360	256,233	712
2003-04	357	669,084	1,874
2004-05	364	671,022	1,843
2005-06	365	600,689	1,645
2006-07	360	692,930	1,925
2007-08	365	870,259	2,384
2008-09***	487	1,084,736	2,227
2009-10***	489	822,524	1,682
2010-11	359	625,388	1,742

# MSHSL CALENDAR OF EVENTS

2011–2012

ACTIVITY	TOURNAMENT DATES	TOURNAMENT SITE
<b>FALL</b>		
Girls' Tennis	October 25–28	AA – University Baseline Tennis Center, Minneapolis A – Reed-Sweatt Family Tennis Center, Minneapolis
Boys' & Girls' Soccer	October 26–28, 31 November 1, 3	Quarterfinals – Various Sites Semifinals & Finals – Metrodome, Minneapolis
Boys' & Girls' Cross Country Running	November 5	St. Olaf College, Northfield
Girls' Volleyball	November 10–12	Xcel Energy Center, St. Paul
Adapted Soccer	November 18–19	Stillwater Area High School
Football	November 10–12, 18–19, 25–26	Quarterfinals – Various Sites Semifinals & Prep Bowl – Metrodome, Minneapolis
Girls' Swimming & Diving	November 16–18	University Aquatic Center, Minneapolis
<b>WINTER</b>		
Debate	January 13–14	University of Minnesota
Music Contests/Festivals	January–May	TBD by each region
One Act Play	February 9–10	The O'Shaughnessy, St. Catherine University
Boys' & Girls' Alpine Skiing	February 15	Giants Ridge, Biwabik
Boys' & Girls' Nordic Ski Racing	February 16	Giants Ridge, Biwabik
Girls' Dance Team	February 17–18	Target Center, Minneapolis
Girls' Hockey	February 22–25	Xcel Energy Center, St. Paul
Girls' Gymnastics	February 24–25	University Sports Pavilion, Minneapolis
Wrestling	March 1–3	Xcel Energy Center, St. Paul
Boys' Swimming & Diving	March 1–3	University Aquatic Center, Minneapolis
Boys' Hockey	March 7–10	Xcel Energy Center, St. Paul
Girls' Basketball	March 14–17	Target Center, Minneapolis & Williams Arena, Minneapolis
Adapted Floor Hockey	March 16–17	Bloomington Jefferson High School
Boys' Basketball	March 21–24	Target Center, Minneapolis & Williams Arena, Minneapolis
<b>SPRING</b>		
Speech	April 20–21	Chanhassen High School
Adapted Bowling	May 18	Brunswick Zone, Eden Prairie
Adapted Softball	June 1–2	Coon Rapids High School
Boys & Girls' Lacrosse	June 5–8	Chanhassen High School
Boys' Tennis	June 5–8	AA – University Baseline Tennis Center, Minneapolis A – Reed-Sweatt Family Tennis Center, Minneapolis
Girls' Fastpitch Softball	June 7–8	Caswell Park, North Mankato
Boys' & Girls' Track & Field	June 8–9	Hamline University, St. Paul
Boys' & Girls' Golf	June 12–13	AAA – Bunker Hills, Coon Rapids AA – Ridges at Sand Creek, Jordan A – Pebble Creek, Becker
Baseball	June 14–15	AAA – Midway Stadium, St. Paul & Dick Siebert Field, University of MN, Minneapolis AA – Dick Putz Stadium & Joe Faber Fields, St. Cloud A – Chaska Athletic Park & Mini Met, Jordan
	June 19	Championship Games – Target Field, Minneapolis

Photography Credits: Minnesota Prep Photo / [www.MnPrepPhoto.com](http://www.MnPrepPhoto.com)

This report is a publication of the Minnesota State High School League.  
No reproduction of this document is permissible without the written consent of the Minnesota State High School League.